



**GREAT WESTERN MINING CORPORATION PLC**  
**("Great Western", "GWM" or the "Company")**

**MILL UPDATE**

Great Western Mining Corporation PLC (AIM – GWMO, Euronext Growth – 8GW), which is exploring and developing gold, silver and copper targets in the Walker Lane belt of Nevada, USA, provides the following update on the Western Milling Joint Venture:

The Company has been informed by its operating partner that start-up of pilot production at Western Milling is due to commence following a visit by the Nevada State Inspector of Mines, now scheduled for 16 January 2025. Following this visit, a trial run of material will be processed through the mill. Great Western will have personnel on site for this operation.

On the copper exploration front, Great Western has made substantial progress in 2024, upgrading the potential for a large-scale porphyry setting in and around the Huntoon Valley and forming an acreage pooling agreement with its neighbour for advancing the porphyry potential of the Eastside Mine claims. New claims have also recently been staked to cover known tungsten potential and a busy exploration programme is envisaged for 2025.

**For further information:**

**Great Western Mining Corporation PLC**

Brian Hall, Chairman

+44 207 933 8780

Max Williams, Finance Director

+44 207 933 8780

**Davy (NOMAD, Euronext Growth Listing Sponsor & Joint Broker)**

Brian Garrahy

+353 1 679 6363

**SP Angel Corporate Finance LLP (Joint Broker)**

Ewan Leggat/Adam Cowl

+44 203 470 0470

**Walbrook PR (PR advisers)**

Nick Rome

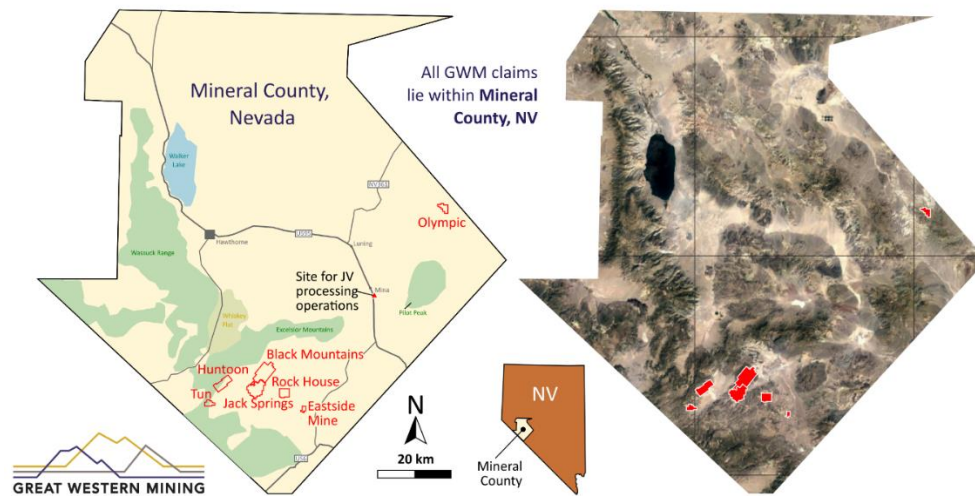
+44 207 933 8783

**Notes to Editors**

The Company has a large tract of acreage in Mineral County, Nevada. The area consists of rugged, mountainous terrain, which means that large parts of it remain under-explored. Mineral potential is hosted by the regional Walker Lane Structural Belt, the largest structural and metallogenic belt in Nevada, yet one of the least explored in recent times, with gold, silver and copper currently produced in Mineral County. Great Western has seven distinct concession areas which offer the potential for exploiting (1) short term gold and silver deposits and (2) long-term, world-class copper deposits.

Six of the Company's properties are in the west of Mineral County and the seventh and most recent acquisition, the Olympic Gold Project, is in the east of the county, some 50 miles from the main group. All the Company's claims are 100% owned. Claims at the Eastside Mine Group have been contributed to a pooling agreement with Bronco Creek Exploration, Inc. and in addition the Company participates in the Huntoon Mine Area Cooperation Agreement with

landowner-neighbour Crowne Point Resources with whom it shares resources. Great Western's small exploration team is supported by locally based consultants and contractors.



The state of Nevada is one of the world's most mining friendly jurisdictions. While tightly regulated and environmentally conscious, Nevada welcomes the mining industry. Great Western takes care to ensure that its claims are maintained in good standing and all regulations observed.

There are numerous gold and silver prospects on the Company's acreage, including extensive historic mine workings which offer the opportunity for secondary recovery. The Company is party to a 50-50 joint venture known as Western Milling LLC which is constructing a mill to process pre-mined material for secondary recovery of gold and silver.

Furthermore, through extensive drilling over a five-year period, GWM has established a Mineral Resource on its first target area known as M2, of 4.3 million tonnes at 0.45% copper, for 19,000 tonnes of contained copper metal. This resource has been independently reported in accordance with JORC guidelines.

GWM has also established an Inferred Resource Estimate of 31,000 tonnes grading 1.6 g/t gold and 3.0 g/t silver in tailings associated with the OMCO Mine at the Olympic Gold Project. Additionally, exploration targets have been independently reported as follows:

- 3,400 – 6,400 tonnes grading between 0.5 and 1.2 g/t Au and 1.2 and 2.1 g/t Ag in the substrate beneath the tailings volume at the Olympic Mine.
- 9,000 – 12,000 tonnes grading between 0.9 and 2.4 g/t Au and 2.0 and 5.1 g/t Ag in a coarse stockpile at Olympic Mine.
- 4,200 – 7,700 tonnes grading between 40 and 140 g/t Ag and 0.3 and 0.3 g/t Au in spoil heaps at Mineral Jackpot.